

□ **GLB-200C**    □ **GLB-240C**

gemline

## 8" Two Handle Kitchen Faucet

**Product Spec Sheet**



### FEATURES & BENEFITS

- This Product Contains Less Than 0.25% Weighted Average Lead Content On Wetted Surfaces
- Metal Lever Handles
- Ceramic Cartridges
- With Side Spray
- Max Flow Rate 1.5 gpm (5.7 L/min) at 60 psi (ASME A112.18.1M/A112.18.1)

GLB-240C  
Chrome Finish

GLB-200C  
Less Side Spray  
Chrome Finish

### APPROVALS:

Meets or Exceeds The Following:

- \* ANSI/ASME A112.18.1M/A112.18.1
- \* NSF/ANSI 61 - Sec. 9
- \* NSF/ANSI 372
- \* IAPMO/cUPC
- \* CA AB1953



NSF/ANSI 372  
NSF/ANSI 61-9



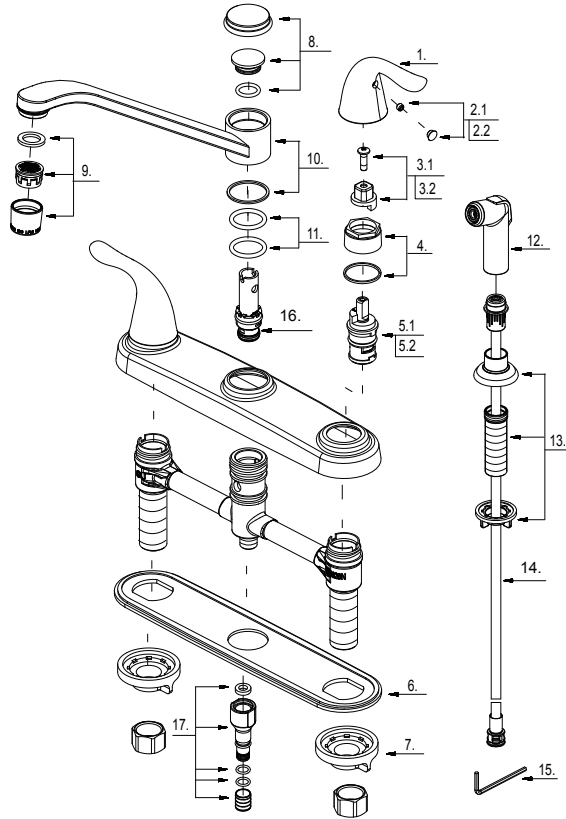
**TEL:** 888-649-0605

**FAX:** 877-892-1950

Visit Our Web Site : [www.gemlinefaucets.com](http://www.gemlinefaucets.com)

# 8" Two Handle Kitchen Faucet

No.	Name	Part No.
1	Metal Handle	A069115
2.1	Index Button-Cold	A603595C
2.2	Index Button-Hot	A603595H
3.1	Handle Adaptor-Cold	A66D574C
3.2	Handle Adaptor-Hot	A66D574H
4	Retainer Nut & Washer	A663631
5.1	Ceramic Disc Cartridge -Cold	A507104N
5.2	Ceramic Disc Cartridge -Hot	A507103N
6	Putty Plate	A011125
7	Lock Nut Set	A504023
8	Spout Trim Cap	A663163N
9	Aerator	A500871N-51
10	Spout Set	A666321N
11	O-Ring Set (Φ7/8" ID * Φ1-1/8" OD)	A668000N
12	Side Spray	A503002N
13	Spray Holder Assembly (3-15/16" L)	A220008
14	Spray Hose	A512139N
15	Hex Wrench (H2.5 * 19 mm L * 53 mm L)	A031000NI
16	Spray Diverter w/Vacuum Breaker	A66G174N
17	Sealing Kit	A66G352N



# Product Spec Sheet

